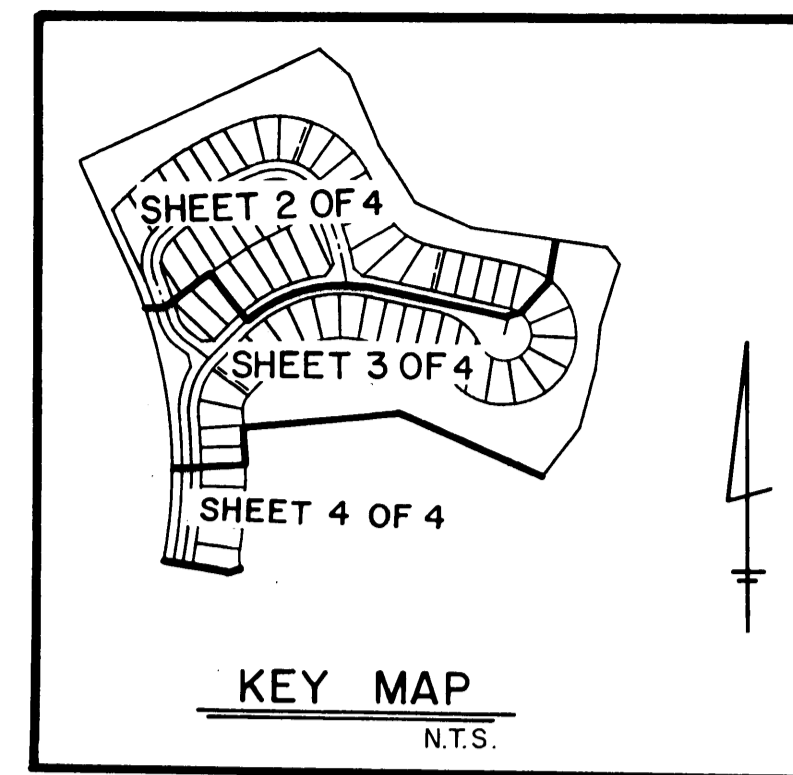
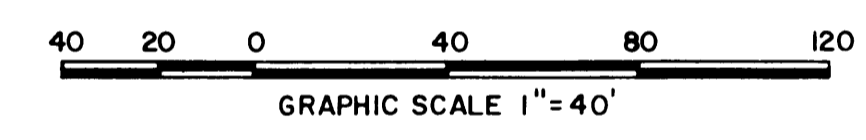
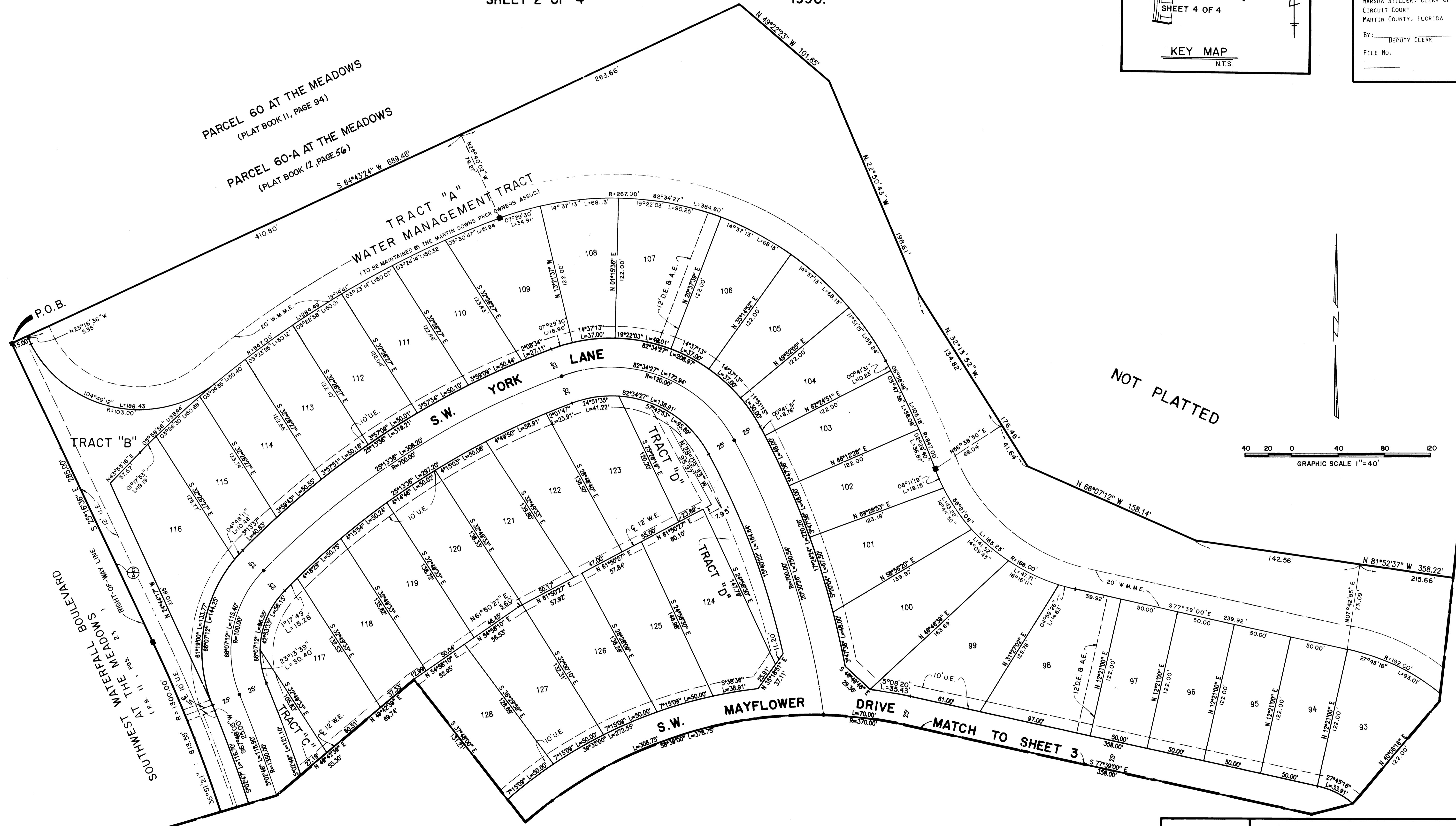


A PLAT OF PARCEL 61-A AT THE MEADOWS

BEING PLAT NO. 59 OF MARTIN DOWNS A P.U.D. ALSO
BEING A REPLAT OF A PORTION OF PARCEL 61 AT THE MEADOWS
BEING PLAT NO. 49 OF MARTIN DOWNS A P.U.D. AS RECORDED
IN P.B. II, PG. 95 PUBLIC RECORD OF MARTIN COUNTY, LYING
IN SECTION 12, TOWNSHIP 38 SOUTH, RANGE 40 EAST, MARTIN COUNTY, FLORIDA
SHEET 2 OF 4
1990.



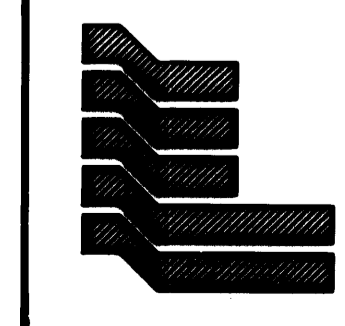
I, MARSHA STILLER, CLERK OF
THE CIRCUIT COURT OF MARTIN
COUNTY, FLORIDA, HEREBY CERTIFY
THAT THIS PLAT WAS FILED FOR
RECORD IN PLAT BOOK 12,
PAGE 57, MARTIN COUNTY,
FLORIDA, PUBLIC RECORDS, THIS
DAY OF _____,
A.D. 19____.
MARSHA STILLER, CLERK OF
CIRCUIT COURT
MARTIN COUNTY, FLORIDA
By: _____
DEPUTY CLERK
FILE NO. _____



NOT PLATTED

PARCEL 60 AT THE MEADOWS
(PLAT BOOK 11, PAGE 94)
PARCEL 60-A AT THE MEADOWS
(PLAT BOOK 12, PAGE 56)

SOUTHWEST WATERFALL BOULEVARD
RIGHT-OF-WAY LINE



Landmark Surveying & Mapping Inc.
1850 FOREST HILL BOULEVARD
PH. (305)433-5405 SUITE 100 W.P.B. FLORIDA

PARCEL 61-A AT THE MEADOWS